

Plone + Windows Made Easy

Enfold Desktop makes the users of your content management system more productive by letting them work with Plone in the familiar Microsoft Windows desktop environment.

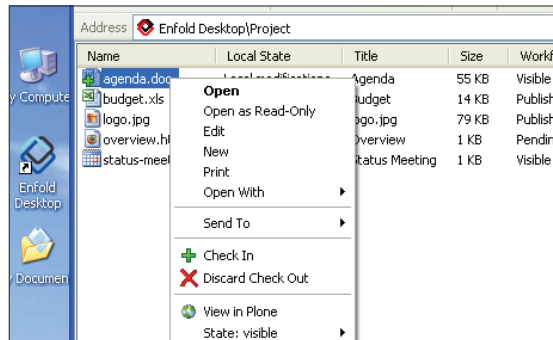
Save time on training because users already know how to drag-and-drop, double-click and right-click to manage their files. And save time in everyday use with a fast Windows desktop interface that makes it a snap to:

- Add multiple files to Plone in one drag-and-drop action
- Open a Plone content item for editing in the program of your choice, such as Microsoft Office or Adobe Dreamweaver
- Lock content automatically during editing and check it back into Plone when you're done

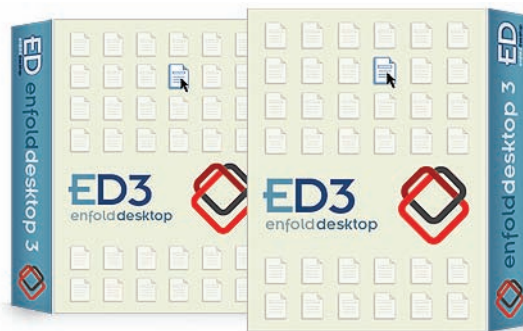
Do all these tasks and more without ever opening your Web browser!

See for yourself by evaluating Enfold Desktop risk-free.

You can download Enfold Desktop and use it on up to five computers free of charge.



→ Enfold Desktop lets users work with Plone in the familiar Windows environment.



Feature Comparison

↓ Feature	Plone	Windows Web Folders	Novell NetDrive	Enfold Desktop
→ Drag and drop content items between Windows and Plone		✓	✓	✓
→ In Windows, cut and paste items to/from Plone		✓	✓	✓
→ Secure, encrypted file transfers to protect private data		✓	✓	✓
→ From Windows folder, open Plone content in local program for editing			✓	✓
→ Automatically lock Plone content during editing				✓
→ In Windows folder, right-click on Plone item to change workflow state				✓
→ In Windows folder, right-click on Plone item to edit name, title, description				✓
→ In Windows folder, right-click on Plone item to modify user permissions				✓
→ Single login for both Windows and Plone connection (with Enfold Server and Enfold Proxy)				✓
→ New Custom sessions for immediate views of often-used folders				✓
→ New Automatic handling of international file names				✓
→ New Ability to extend program for individual needs	✓			✓
→ 30 days of professional installation support with purchase				✓

Requirements

Enfold Desktop consists of two parts:

- A server component (preinstalled in Enfold Server), which runs as an add-on product to the Plone server
- A client component, which runs on each user's computer

Server component

The server component requires Enfold Server, which ships with this component already installed, or Plone 2.x on any operating system.

Client component

The client component requires:

- Microsoft Windows 2000, XP or 2003
- Administrative privileges on the client computer
- Enfold Server, Enfold Proxy and a Windows domain login to use the optional single sign-on feature

User Comments

I LOVE LOVE LOVE this product. It has saved me untold amounts of time (I'm talking HOURS here) in uploading event photographs to the website.

Tess Bond
System Analyst/Programmer
Faulkner State Community College

It provides a more familiar metaphor to our users than Plone/Zope. Our intranet applications simply will not be used to their full potential if users do not feel comfortable in their environment.

David Gribble
Director of Information Technology
Penn State University, McKeesport

Enfold Desktop fills my need for a bulk upload tool for Plone. Files and images are automatically typed by content in one drag-and-drop operation, saving me countless hours of clicks. The greatest part has been the support. Any question I've had has been answered within minutes. Enfold Systems offers support like no other software vendor I've worked with in my 27 years of professional experience.

Chris Calloway
SouthEast Atlantic Coastal Ocean
Observing System

Enfold Systems

4617 Montrose Blvd., Ste. C215
Houston, TX 77006 USA

t +1 713 942 2377
f +1 832 201 8856
info@enfoldsystems.com
www.enfoldsystems.com